



"... meeting community needs ... enhancing quality of life."

DEPARTMENT OF PUBLIC WORKS
Engineering Division – Traffic Section
2625 E. Glendale Avenue
Appleton, WI 54911
TEL (920) 832-5580
FAX (920) 832-5570

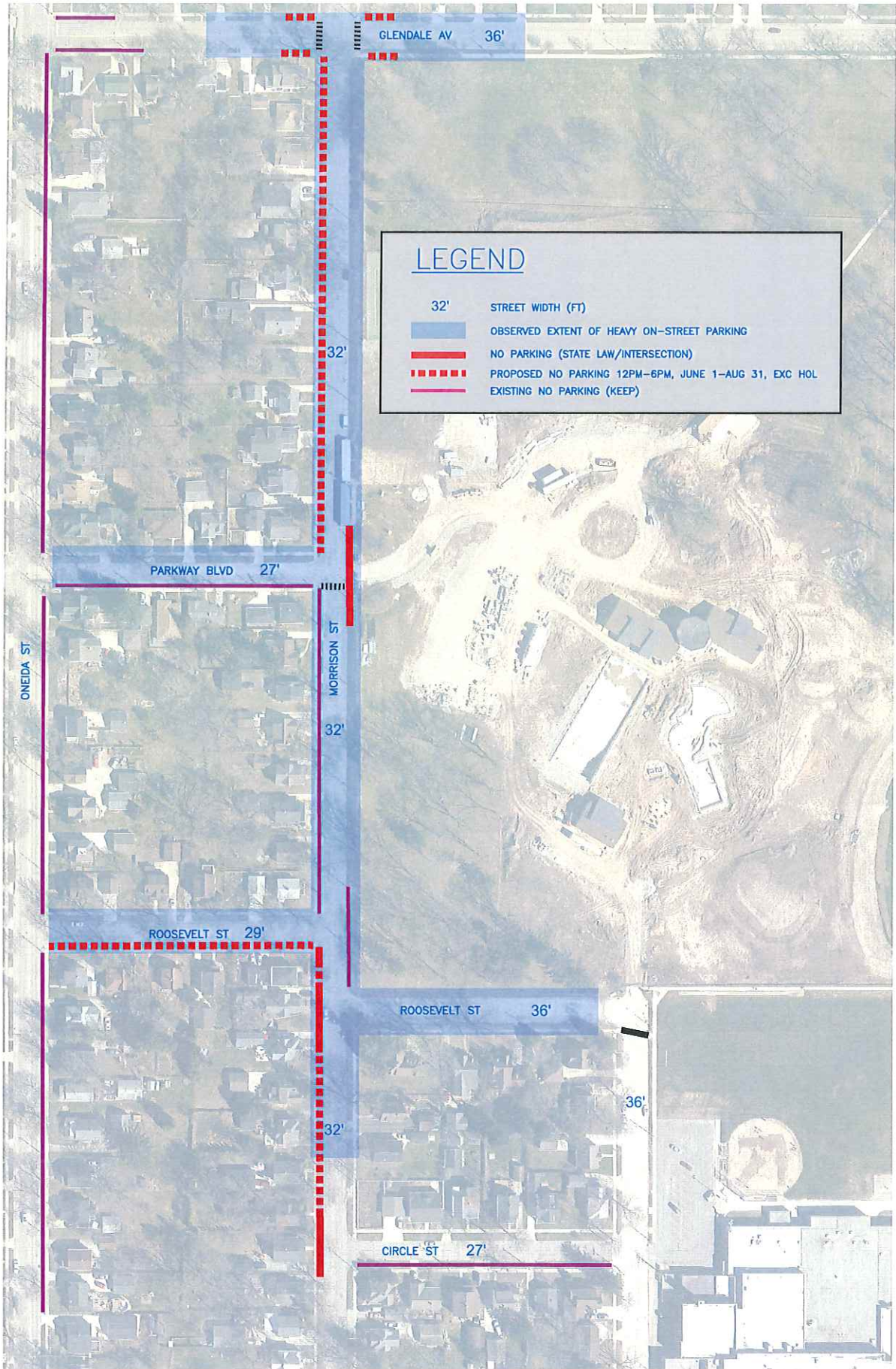
To: Municipal Services Committee
From: Eric Lom, City Traffic Engineer
Date: March 7, 2018
Re: Proposed parking change near Erb Park
Proposed Six-Month Trial Period

Over the course of last summer, my office received numerous concerns about traffic safety issues associated with the opening of the new Erb Park Pool. The popularity of the pool led to a significant increase in traffic and parking on the streets located along the west side of the park. The combination of the increased traffic and bumper-to-bumper on-street parking on both sides of some of the streets in this area made two-way traffic difficult, and some blocks were almost impassable for city buses and larger emergency vehicles. While wider roads like Glendale Avenue (36 feet) are designed to better handle this combination of parking and traffic, roads like Morrison Street (32 feet) and 100 E. Roosevelt Street (28 feet) are not.

In an effort to address these issues last summer, temporary *No Parking* signs (on wood stakes) were installed in various locations. These signs were temporary in nature and were intended to address the immediate safety concerns until decisions could be made regarding a long-term solution.

Based on our review, the attached map shows the parking restrictions we believe would represent the best blend of safety and convenience for the neighborhood. These restrictions would be marked with conventional signs and posts.

Affected residents received a mailing outlining this proposal and an invitation to the March 12th Municipal Services Committee meeting. As of Wednesday, March 7, only one property owner contacted my office. She was in favor of the proposed plan.



GLENDALE AV 36'

LEGEND

- 32' STREET WIDTH (FT)
- OBSERVED EXTENT OF HEAVY ON-STREET PARKING
- NO PARKING (STATE LAW/INTERSECTION)
- PROPOSED NO PARKING 12PM-6PM, JUNE 1-AUG 31, EXC HOL
- EXISTING NO PARKING (KEEP)

32'

PARKWAY BLVD 27'

ONEIDA ST

MORRISON ST

32'

ROOSEVELT ST 29'

ROOSEVELT ST 36'

32'

CIRCLE ST 27'

36'