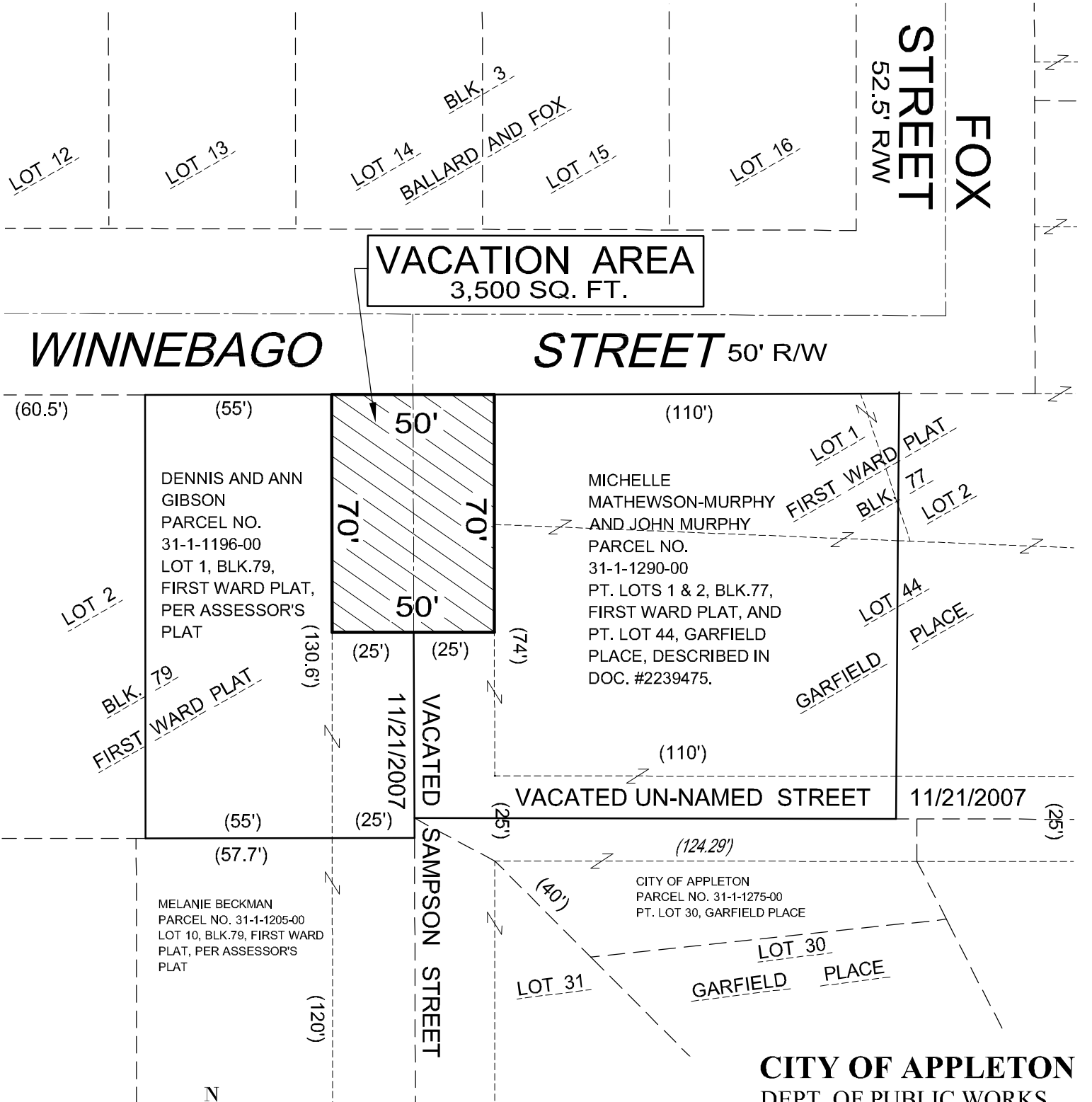




# EXHIBIT "A"

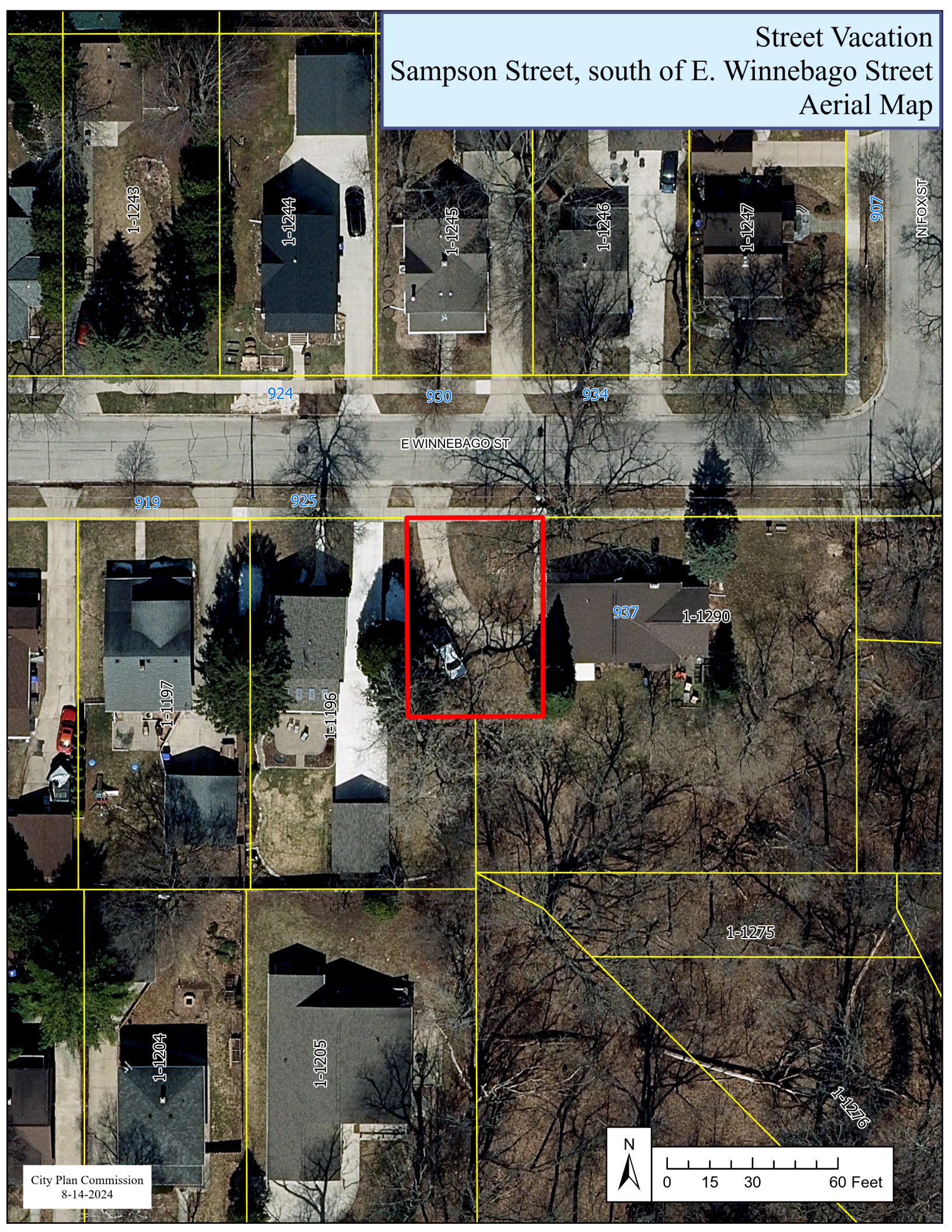
## SAMPSON STREET VACATION

The North 70 feet of Sampson Street, bounded on the North by the South line of Winnebago Street, on the West by Block 79 of the 1st Ward Plat, and on the East by Block 77 of the 1st Ward Plat and also Lot 44 of the Garfield Place Plat, all according to the recorded Assessor's Plat of the City of Appleton, being located in the NW ¼ of Section 25, T.21N., R.17E., City of Appleton, Outagamie County, Wisconsin.



**CITY OF APPLETON**  
DEPT. OF PUBLIC WORKS  
ENGINEERING DIVISION  
100 NORTH APPLETON STREET  
APPLETON, WI 54911  
920-832-6474  
DRAFTED BY: T. KROMM  
Acad\Vacation\2024\Sampson\_0717\_2024

# Street Vacation Sampson Street, south of E. Winnebago Street Aerial Map



1-1243

1-1244

1-1245

1-1246

1-1247

907

N FOX ST

924

930

934

E WINNEBAGO ST

919

925

1-1197

1-1196

937

1-1290

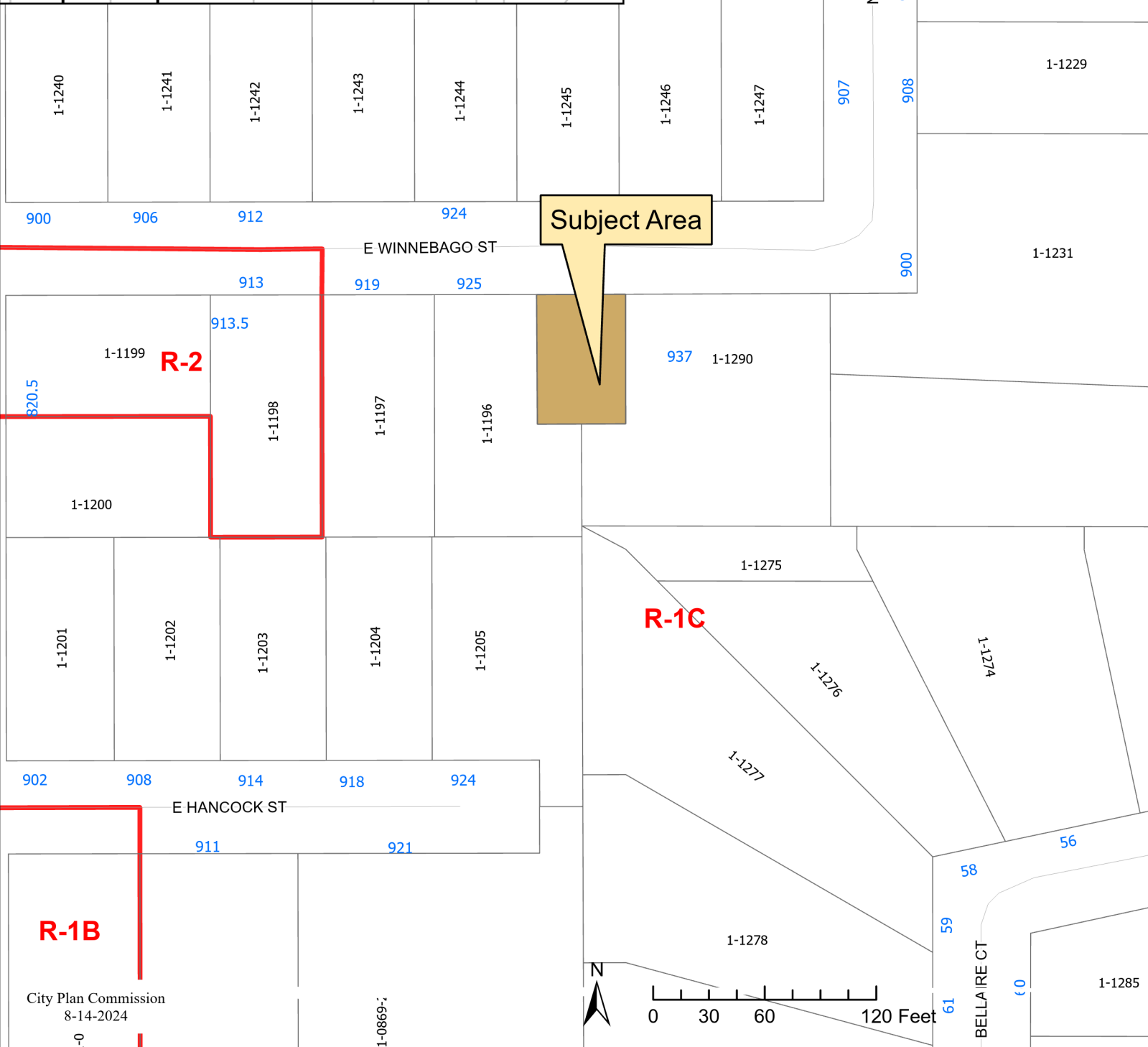
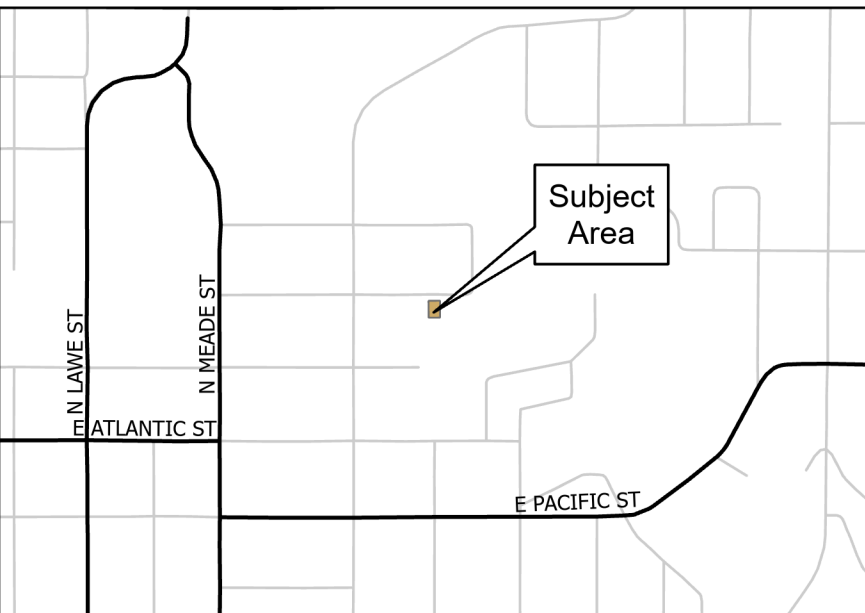
1-1204

1-1205

1-1275

1-1276

# Street Vacation Sampson Street, south of E. Winnebago Street



City Plan Commission  
8-14-2024

1-0869;

