

NOTICE OF PUBLIC HEARING
OF THE
APPLETON CITY PLAN COMMISSION

Dear property owner(s):

The City of Appleton Plan Commission will conduct a Public Hearing on Tuesday, August 22, 2017, at 4:00 P.M., or as soon thereafter as can be heard, in Common Council Chambers, 6th Floor, City Hall, 100 North Appleton Street, for the purpose of considering the following proposed Special Use Permit:

- Pursuant to Sections 23-66, 23-113, and 23-151 of the Appleton Municipal Code, to consider a request by RiverHeath Hospitality, LLC, owner, for property located at 101 South RiverHeath Way (Tax Id #31-4-0828-09) to obtain a Special Use Permit for a hotel/restaurant and outdoor patio/common area with alcohol sales and consumption. In the PD/C-2 Planned Development General Commercial District for PD #1-11, a Special Use Permit is required for a hotel/restaurant and outdoor patio/common area with alcohol sales and consumption.

- ALDERMANIC DISTRICT: 4 – Alderperson Joe Martin

You are being notified as a policy of the City of Appleton Community and Economic Development Department. This notification invites you to appear before the Appleton City Plan Commission, and you will be given an opportunity to express your views or concerns regarding the above-described request. You may also address the City Plan Commission by letter at the address below. The City Plan Commission makes a recommendation to the Common Council who makes the final decision on the matter.

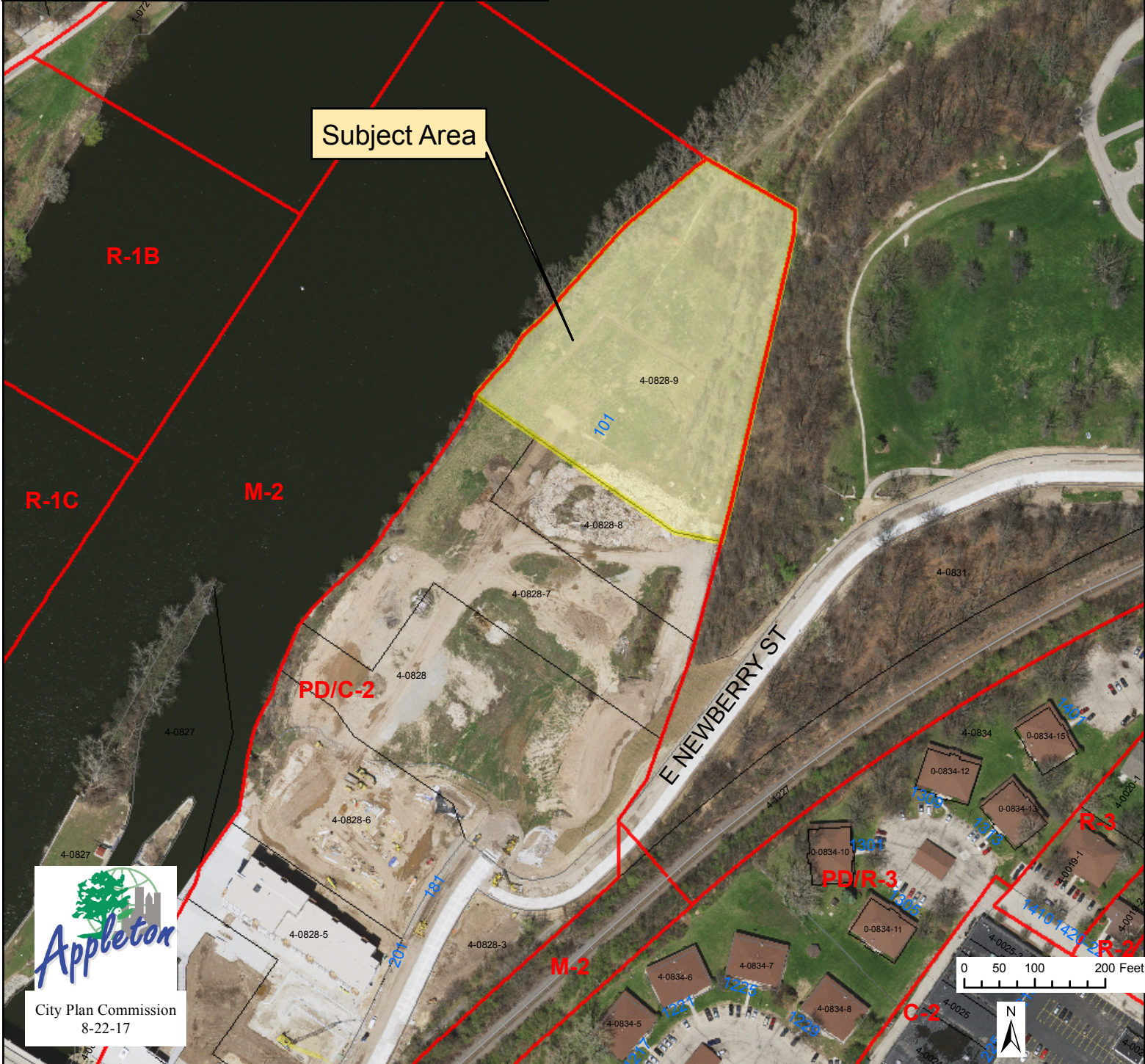
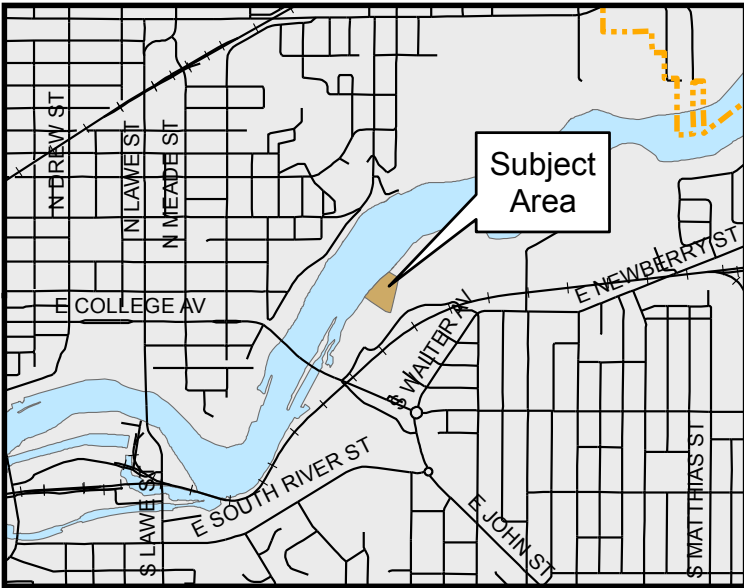
Any questions regarding this matter should be directed to Don Harp, Principal Planner, in the Community and Economic Development Department at 920-832-6466.

CITY PLAN COMMISSION

COMMUNITY & ECONOMIC DEVELOPMENT
CITY HALL - 100 NORTH APPLETON STREET
APPLETON, WISCONSIN 54911-4799
920-832-6468

Reasonable accommodations for persons with disabilities will be made upon request and if feasible.

Special Use Permit
 Restaurant with Alcohol Sales
 Courtyard Marriott - RiverHeath
 101 S RiverHeath Way



City Plan Commission
 8-22-17

**Courtyard by Marriott -
RiverHeath**
Appleton, Wisconsin

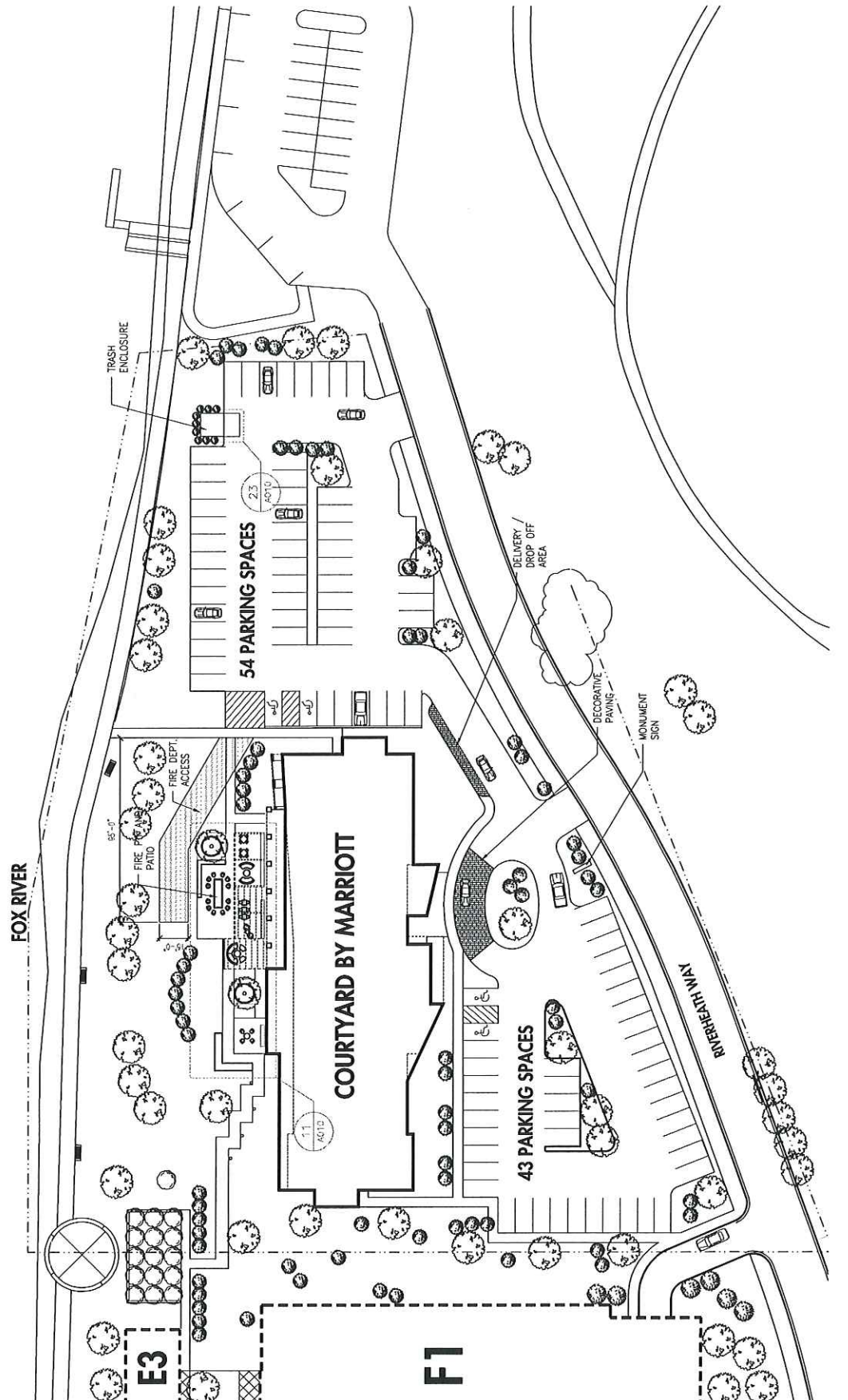
Tenacity Development LLC
103 West College Avenue, Suite 103
Appleton, WI 54911
PROJECT NUMBER: 07171-16

ISSUED FOR: DESCRIPTION: 04-2016

REVISION FOR: NO. DESCRIPTION DATE

DRAWN BY: Author
CHECKED BY: Checker

ARCHITECTURAL
SITE PLAN
Cherry GEN 5



ARCHITECTURAL SITE PLAN
1" = 20'-0"
N

| Plant Code | Plant Name | Quantity | Notes |
|------------|-------------------|----------|--------------|
| 1 | 1" DBL. HYDRANT | 1 | See Schedule |
| 2 | 2" DBL. HYDRANT | 1 | See Schedule |
| 3 | 3" DBL. HYDRANT | 1 | See Schedule |
| 4 | 4" DBL. HYDRANT | 1 | See Schedule |
| 5 | 5" DBL. HYDRANT | 1 | See Schedule |
| 6 | 6" DBL. HYDRANT | 1 | See Schedule |
| 7 | 7" DBL. HYDRANT | 1 | See Schedule |
| 8 | 8" DBL. HYDRANT | 1 | See Schedule |
| 9 | 9" DBL. HYDRANT | 1 | See Schedule |
| 10 | 10" DBL. HYDRANT | 1 | See Schedule |
| 11 | 11" DBL. HYDRANT | 1 | See Schedule |
| 12 | 12" DBL. HYDRANT | 1 | See Schedule |
| 13 | 13" DBL. HYDRANT | 1 | See Schedule |
| 14 | 14" DBL. HYDRANT | 1 | See Schedule |
| 15 | 15" DBL. HYDRANT | 1 | See Schedule |
| 16 | 16" DBL. HYDRANT | 1 | See Schedule |
| 17 | 17" DBL. HYDRANT | 1 | See Schedule |
| 18 | 18" DBL. HYDRANT | 1 | See Schedule |
| 19 | 19" DBL. HYDRANT | 1 | See Schedule |
| 20 | 20" DBL. HYDRANT | 1 | See Schedule |
| 21 | 21" DBL. HYDRANT | 1 | See Schedule |
| 22 | 22" DBL. HYDRANT | 1 | See Schedule |
| 23 | 23" DBL. HYDRANT | 1 | See Schedule |
| 24 | 24" DBL. HYDRANT | 1 | See Schedule |
| 25 | 25" DBL. HYDRANT | 1 | See Schedule |
| 26 | 26" DBL. HYDRANT | 1 | See Schedule |
| 27 | 27" DBL. HYDRANT | 1 | See Schedule |
| 28 | 28" DBL. HYDRANT | 1 | See Schedule |
| 29 | 29" DBL. HYDRANT | 1 | See Schedule |
| 30 | 30" DBL. HYDRANT | 1 | See Schedule |
| 31 | 31" DBL. HYDRANT | 1 | See Schedule |
| 32 | 32" DBL. HYDRANT | 1 | See Schedule |
| 33 | 33" DBL. HYDRANT | 1 | See Schedule |
| 34 | 34" DBL. HYDRANT | 1 | See Schedule |
| 35 | 35" DBL. HYDRANT | 1 | See Schedule |
| 36 | 36" DBL. HYDRANT | 1 | See Schedule |
| 37 | 37" DBL. HYDRANT | 1 | See Schedule |
| 38 | 38" DBL. HYDRANT | 1 | See Schedule |
| 39 | 39" DBL. HYDRANT | 1 | See Schedule |
| 40 | 40" DBL. HYDRANT | 1 | See Schedule |
| 41 | 41" DBL. HYDRANT | 1 | See Schedule |
| 42 | 42" DBL. HYDRANT | 1 | See Schedule |
| 43 | 43" DBL. HYDRANT | 1 | See Schedule |
| 44 | 44" DBL. HYDRANT | 1 | See Schedule |
| 45 | 45" DBL. HYDRANT | 1 | See Schedule |
| 46 | 46" DBL. HYDRANT | 1 | See Schedule |
| 47 | 47" DBL. HYDRANT | 1 | See Schedule |
| 48 | 48" DBL. HYDRANT | 1 | See Schedule |
| 49 | 49" DBL. HYDRANT | 1 | See Schedule |
| 50 | 50" DBL. HYDRANT | 1 | See Schedule |
| 51 | 51" DBL. HYDRANT | 1 | See Schedule |
| 52 | 52" DBL. HYDRANT | 1 | See Schedule |
| 53 | 53" DBL. HYDRANT | 1 | See Schedule |
| 54 | 54" DBL. HYDRANT | 1 | See Schedule |
| 55 | 55" DBL. HYDRANT | 1 | See Schedule |
| 56 | 56" DBL. HYDRANT | 1 | See Schedule |
| 57 | 57" DBL. HYDRANT | 1 | See Schedule |
| 58 | 58" DBL. HYDRANT | 1 | See Schedule |
| 59 | 59" DBL. HYDRANT | 1 | See Schedule |
| 60 | 60" DBL. HYDRANT | 1 | See Schedule |
| 61 | 61" DBL. HYDRANT | 1 | See Schedule |
| 62 | 62" DBL. HYDRANT | 1 | See Schedule |
| 63 | 63" DBL. HYDRANT | 1 | See Schedule |
| 64 | 64" DBL. HYDRANT | 1 | See Schedule |
| 65 | 65" DBL. HYDRANT | 1 | See Schedule |
| 66 | 66" DBL. HYDRANT | 1 | See Schedule |
| 67 | 67" DBL. HYDRANT | 1 | See Schedule |
| 68 | 68" DBL. HYDRANT | 1 | See Schedule |
| 69 | 69" DBL. HYDRANT | 1 | See Schedule |
| 70 | 70" DBL. HYDRANT | 1 | See Schedule |
| 71 | 71" DBL. HYDRANT | 1 | See Schedule |
| 72 | 72" DBL. HYDRANT | 1 | See Schedule |
| 73 | 73" DBL. HYDRANT | 1 | See Schedule |
| 74 | 74" DBL. HYDRANT | 1 | See Schedule |
| 75 | 75" DBL. HYDRANT | 1 | See Schedule |
| 76 | 76" DBL. HYDRANT | 1 | See Schedule |
| 77 | 77" DBL. HYDRANT | 1 | See Schedule |
| 78 | 78" DBL. HYDRANT | 1 | See Schedule |
| 79 | 79" DBL. HYDRANT | 1 | See Schedule |
| 80 | 80" DBL. HYDRANT | 1 | See Schedule |
| 81 | 81" DBL. HYDRANT | 1 | See Schedule |
| 82 | 82" DBL. HYDRANT | 1 | See Schedule |
| 83 | 83" DBL. HYDRANT | 1 | See Schedule |
| 84 | 84" DBL. HYDRANT | 1 | See Schedule |
| 85 | 85" DBL. HYDRANT | 1 | See Schedule |
| 86 | 86" DBL. HYDRANT | 1 | See Schedule |
| 87 | 87" DBL. HYDRANT | 1 | See Schedule |
| 88 | 88" DBL. HYDRANT | 1 | See Schedule |
| 89 | 89" DBL. HYDRANT | 1 | See Schedule |
| 90 | 90" DBL. HYDRANT | 1 | See Schedule |
| 91 | 91" DBL. HYDRANT | 1 | See Schedule |
| 92 | 92" DBL. HYDRANT | 1 | See Schedule |
| 93 | 93" DBL. HYDRANT | 1 | See Schedule |
| 94 | 94" DBL. HYDRANT | 1 | See Schedule |
| 95 | 95" DBL. HYDRANT | 1 | See Schedule |
| 96 | 96" DBL. HYDRANT | 1 | See Schedule |
| 97 | 97" DBL. HYDRANT | 1 | See Schedule |
| 98 | 98" DBL. HYDRANT | 1 | See Schedule |
| 99 | 99" DBL. HYDRANT | 1 | See Schedule |
| 100 | 100" DBL. HYDRANT | 1 | See Schedule |

| Plant Code | Plant Name | Quantity | Notes |
|------------|-------------------|----------|--------------|
| 101 | 101" DBL. HYDRANT | 1 | See Schedule |
| 102 | 102" DBL. HYDRANT | 1 | See Schedule |
| 103 | 103" DBL. HYDRANT | 1 | See Schedule |
| 104 | 104" DBL. HYDRANT | 1 | See Schedule |
| 105 | 105" DBL. HYDRANT | 1 | See Schedule |
| 106 | 106" DBL. HYDRANT | 1 | See Schedule |
| 107 | 107" DBL. HYDRANT | 1 | See Schedule |
| 108 | 108" DBL. HYDRANT | 1 | See Schedule |
| 109 | 109" DBL. HYDRANT | 1 | See Schedule |
| 110 | 110" DBL. HYDRANT | 1 | See Schedule |
| 111 | 111" DBL. HYDRANT | 1 | See Schedule |
| 112 | 112" DBL. HYDRANT | 1 | See Schedule |
| 113 | 113" DBL. HYDRANT | 1 | See Schedule |
| 114 | 114" DBL. HYDRANT | 1 | See Schedule |
| 115 | 115" DBL. HYDRANT | 1 | See Schedule |
| 116 | 116" DBL. HYDRANT | 1 | See Schedule |
| 117 | 117" DBL. HYDRANT | 1 | See Schedule |
| 118 | 118" DBL. HYDRANT | 1 | See Schedule |
| 119 | 119" DBL. HYDRANT | 1 | See Schedule |
| 120 | 120" DBL. HYDRANT | 1 | See Schedule |
| 121 | 121" DBL. HYDRANT | 1 | See Schedule |
| 122 | 122" DBL. HYDRANT | 1 | See Schedule |
| 123 | 123" DBL. HYDRANT | 1 | See Schedule |
| 124 | 124" DBL. HYDRANT | 1 | See Schedule |
| 125 | 125" DBL. HYDRANT | 1 | See Schedule |
| 126 | 126" DBL. HYDRANT | 1 | See Schedule |
| 127 | 127" DBL. HYDRANT | 1 | See Schedule |
| 128 | 128" DBL. HYDRANT | 1 | See Schedule |
| 129 | 129" DBL. HYDRANT | 1 | See Schedule |
| 130 | 130" DBL. HYDRANT | 1 | See Schedule |
| 131 | 131" DBL. HYDRANT | 1 | See Schedule |
| 132 | 132" DBL. HYDRANT | 1 | See Schedule |
| 133 | 133" DBL. HYDRANT | 1 | See Schedule |
| 134 | 134" DBL. HYDRANT | 1 | See Schedule |
| 135 | 135" DBL. HYDRANT | 1 | See Schedule |
| 136 | 136" DBL. HYDRANT | 1 | See Schedule |
| 137 | 137" DBL. HYDRANT | 1 | See Schedule |
| 138 | 138" DBL. HYDRANT | 1 | See Schedule |
| 139 | 139" DBL. HYDRANT | 1 | See Schedule |
| 140 | 140" DBL. HYDRANT | 1 | See Schedule |
| 141 | 141" DBL. HYDRANT | 1 | See Schedule |
| 142 | 142" DBL. HYDRANT | 1 | See Schedule |
| 143 | 143" DBL. HYDRANT | 1 | See Schedule |
| 144 | 144" DBL. HYDRANT | 1 | See Schedule |
| 145 | 145" DBL. HYDRANT | 1 | See Schedule |
| 146 | 146" DBL. HYDRANT | 1 | See Schedule |
| 147 | 147" DBL. HYDRANT | 1 | See Schedule |
| 148 | 148" DBL. HYDRANT | 1 | See Schedule |
| 149 | 149" DBL. HYDRANT | 1 | See Schedule |
| 150 | 150" DBL. HYDRANT | 1 | See Schedule |

LANDSCAPE NOTES

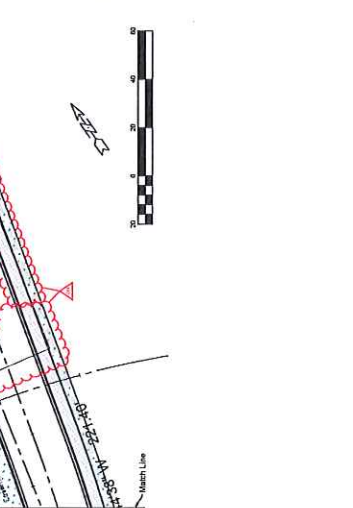
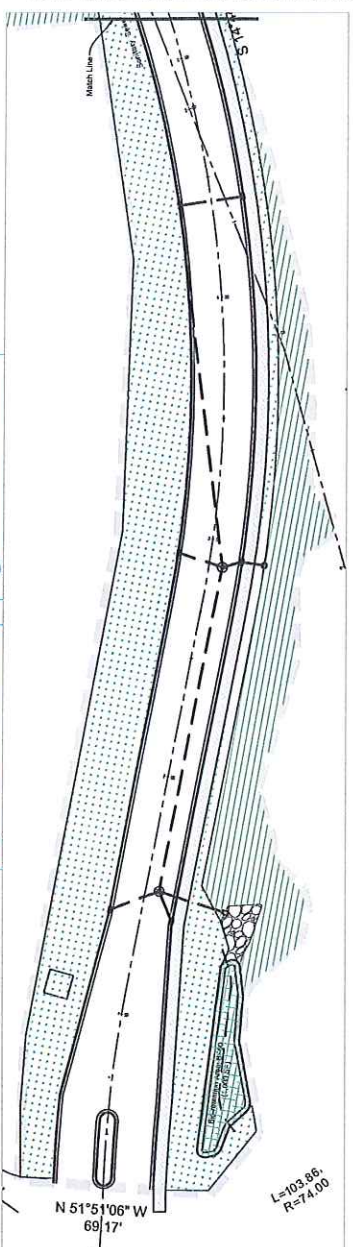
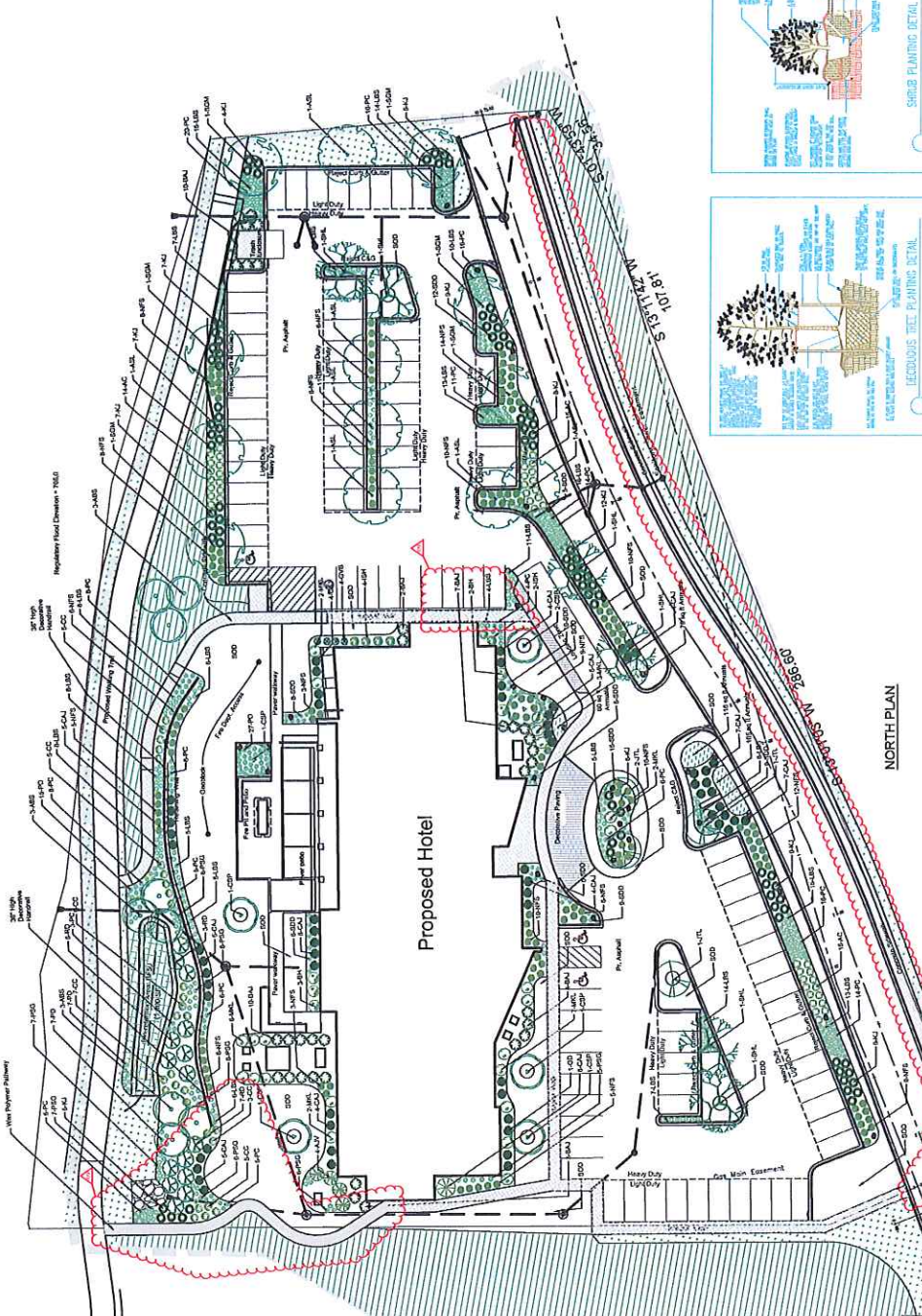
1. Planting: Provide trees, shrubs, and groundcover as specified in the schedule. Planting shall be done in accordance with the University of Wisconsin-Extension, Horticulture Research Station, "Planting and Care of Trees and Shrubs" (H-1520). All plants shall be installed in accordance with the University of Wisconsin-Extension, Horticulture Research Station, "Planting and Care of Trees and Shrubs" (H-1520). All plants shall be installed in accordance with the University of Wisconsin-Extension, Horticulture Research Station, "Planting and Care of Trees and Shrubs" (H-1520).

2. Irrigation: Provide irrigation system as specified in the schedule. The system shall be designed to provide adequate water to all plants during the growing season. The system shall be installed in accordance with the University of Wisconsin-Extension, Horticulture Research Station, "Irrigation Systems" (H-1521).

3. Mulch: Provide mulch as specified in the schedule. The mulch shall be applied in a layer 2-4 inches thick around all plants. The mulch shall be installed in accordance with the University of Wisconsin-Extension, Horticulture Research Station, "Mulch" (H-1522).

4. Fertilization: Provide fertilization as specified in the schedule. The fertilizer shall be applied in accordance with the University of Wisconsin-Extension, Horticulture Research Station, "Fertilization" (H-1523).

5. Maintenance: Provide maintenance as specified in the schedule. The maintenance shall be performed in accordance with the University of Wisconsin-Extension, Horticulture Research Station, "Maintenance" (H-1524).



SOUTH PLAN

